



Affiliated to the Scottish Photographic Federation
and the
Photographic Alliance of Great Britain

SESSION 2018-19

68 Great King Street, Edinburgh EH3 6QU
www.edinburghphotographicsociety.co.uk

EDINBURGH PHOTOGRAPHIC SOCIETY

Scottish Charitable Incorporated Organisation: SC017042

Affiliated to the Scottish Photographic Federation and the
Photographic Alliance of Great Britain.
Membership of the Edinburgh Photographic Society is open
to all who practise or are interested in photography.

Hon. President

The Right Hon. The Lord Provost

Hon. Vice-Presidents

Margaret Salisbury *FRPS FIPF MFIAP APAGB*
Bob Moore *Hon FRPS Hon PAGB MPAGB FIPF FBIPP*
Sandy Cleland *FRPS AFIAP Hon SPF*

Hon. Members

John Ruickbie *ARPS*, Sandy Cleland *FRPS AFIAP Hon SPF*
Sue Goode, Edward Richards, Edith Smith *LRPS*, Alison Bradley, June Scott,
Tony Bellhouse, Peter Stubbs *FRPS AFIAP*,
Neil Scott *FRPS EFIAP/s DPAGB*

Enquiries of a general nature should be made to
The Secretary, Edinburgh Photographic Society,
Email - secretary@edinburghphotographicsociety.co.uk

Enquiries about Membership and/or Keys should be made to the
New Membership Secretary, Jim Moir, Tel. 07954 409733
Email – newmembers@edinburghphotographicsociety.co.uk

Renewals to the Membership Secretary Claire Chase,
Email - membership@edinburghphotographicsociety.co.uk

Or write to The Secretary, Edinburgh Photographic Society, 68 Great
King Street, Edinburgh, EH3 6QU

www.edinburghphotographicsociety.co.uk

Season 2018 – 2019

Office Bearers (*contact details are listed at the back of this booklet*)

President (T)	Doug Berndt <i>ARPS EFIAP</i>
Immediate Past President (T)	Jean Manson
Senior Vice-President (T)	Isobel Lindsay
Junior Vice-President (T)	Jim Moir <i>LRPS AFIAP</i>
Secretary (T)	Bob Redpath
Treasurer (T)	Tony Bellhouse
House Committee Convenor	Isobel Lindsay
Property Committee Convenor	Stephen Meek
Webmaster	Tom Gardner <i>ARPS</i>
International Exhibition Secretary	Edith Smith <i>LRPS</i>

(T) *Indicates a Trustee*

Councillors

Mike Caithness *ARPS*, James Glass, Ian Goodall, Jan Jerome *ARPS*,
Graham Morrice, Terry Railley *LRPS EFIAP/g DPAGB*, Caroline McDermott,
Eric Robinson, Neil Patton

Other useful contacts

Help is available in many forms in the Society and the following may be contacted for specific areas. Any member of Council will be pleased to assist.

Studio Advice, Workshops and	Billy McGuire or
Studio Equipment Instruction	Terry Railley <i>EFIAP/g. DPAGB LRPS</i>
Print Competition Secretary	James Glass
Projected Images Comp Secy.	Graham Morrice
Members' Exhibition Secretary	Muriel Binnie
External Competitions	Jim Moir <i>LRPS AFIAP and</i> Eion Johnston <i>FRPS EFIAP/g DPAGB</i>
International Exhibition Treasurer	Richard Bingham <i>ARPS EFIAP/g</i>
Membership Secretary	Claire Chase
New Members Secretary	Jim Moir <i>LRPS</i>
Syllabus Secretary	Caroline McDermott
Librarian	Alistair Cowan
Bulletin Editor	Robert Galloway <i>LRPS</i>
Curator	Gordon Rankin

GROUPS

Membership of these groups is open to members of the Society only. Members may attend any group meeting but running expenses may be levied as appropriate. Further details may be obtained from Group Secretaries.

Creative Digital Group:

Meets on Mondays for talks on a wide range of topics, workshops, group activities and competitions (Group annual fee £10). We welcome photographers at all levels of experience. See our page on the EPS website for more information. The following trophies are awarded:

- Advanced Cup - Best League 1 performance; Intermediate Cup - Best League 2 performance; Gwyer Shield - Best New Member performance.
- Digital Challenge Cup for an image that demonstrates post-capture editing.
- Cunningham Cup for three images on a theme of the photographer's choice.

Submission to group competitions and workshops is by e-mail to cdgroup@edinburghphotographicsociety.co.uk.

Group Secretary Isobel Lindsay

Group Competition Secretary Alistair Cowan

Phoenix Group:

The Phoenix Group is an informal discussion group – no subscription. Its *raison d'être* is to act as a forum for people to talk about their photography. The general idea is to bring along a few images (prints or PDIs,) and put them up for discussion. These may be images from a personal project that you are undertaking, from an idea that you are pursuing; they may be the germ of an idea for aiming for a distinction. You may be thinking of entering exhibitions or salons. You might just want to get an opinion of some of your favourite photographs. You don't need to bring images - just come along and spectate if you want to see what others are doing.

But, be warned! You will get honest opinions. If there is room for improvement in your work, you will be told, although in a gentle manner.

We are not a beginners' group. We do not give basic instruction in technique or equipment. Having said that, we do welcome members of all abilities who feel they can take advantage of our approach. If you think you can benefit, come along and join us.

Group Secretary Neil Scott *FRPS EFIAP/s DPAGB*

Nature Group:

Monthly meetings cover both the technical and aesthetic aspects of photographing nature. Beginners and experienced practitioners are equally welcome. An exhibition of prints by members will be held in February. Field outings will be announced during the season. The *An Iolaire* cup is awarded for the best set of three images on a theme of the photographer's choice.

Group Secretary Robert Galloway *LRPS* *Group Treasurer* June Scott

Delos Outings Group:

All members are able to suggest and organise an outing inviting other members along. Often groups of friends within the Society plan and organise photography trips.

Photography outings can be around Edinburgh or beyond. Typical outings involve 2-3 hours photography, after which members usually meet in a café or bar for post-shoot refreshments. Members are encouraged to add images of any EPS Member outings, however organised, to the Society's Delos Flickr group. Flickr images are mirrored on the EPS website. (<https://www.flickr.com/groups/de-los>)

If you wish to arrange a meeting, contact any Council Member who will be able to forward an email to EPS membership on your behalf. It's a great way to meet fellow photographers and pick up hints and tips to improve your photography.

Announcements are usually made via email so please join the EPS mailing list.

Group Secretary Vacant

Note: Several EPS members are actively involved in the Edinburgh Meet-Ups Group which is outside of the Society. This group has a programmed list of regular activities and meets for photography and informal discussion. Details of the Edinburgh Meet-ups events here: <https://www.meetup.com/The-Edinburgh-Photography-Meetup-Group/>

Studio and Portrait Group:

1. Open sessions are held regularly throughout the season for all (including non-studio members). These are practical sessions with a model present. Experienced studio group members will be on hand to help out beginners. Studio tuition for beginners may be available at some of these sessions, with members being notified via a Group email. There is a small charge for model hire on the night (around £4 per person). Members are encouraged to share images from the various sessions with the group and model.
2. Studio Portrait Sessions: There will be a series of 4 studio portraiture events this season. These sessions will be led by Eric Robinson and each will feature an experienced professional model. Short studio notes relating to each session will be made available to those attending. The aim of these sessions is to allow members to gain some experience of working in a studio environment. Sessions are limited to 5 members, this will allow attendees to start to develop their own unique style. Invitation to join will be by email on a first-come, first-served basis. A charge of approximately £12 will be levied for the model at each session.
3. Additional special events may also be organised throughout the year. Incurred cost of these would be levied from those attending.

Group Secretary Terry Railley *LRPS EFIAP/g DPAGB*

FACILITIES AND ACTIVITIES

MEETINGS: From September to April meetings are held every WEDNESDAY at 7:30 p.m. These include lectures on all aspects of photography, practical demonstrations, competitions etc. Special interest groups meet on other nights of the week (see under Groups above).

IMPROVERS: There are two open lectures in the session on Adobe PS/LR Software. There is a lot of photographic experience, knowledge and skill amongst our membership, many of whom will be pleased to help. Contact a member of Council in the first instance. Our general advice for improving your photography is to get involved in the Society's activities.

DARKROOM: An excellently equipped darkroom in the basement can be used at any time of day or night by members who have paid the Darkroom Fee (see Annual Subscriptions). Enlargers from 35mm to 5" x 7" are available for monochrome work.

LOCKERS: are available in the basement for individual storage of equipment.

LENDING LIBRARY: A library of photographic books from which members may borrow is open by request to any Council member. Members of the public, on payment of a suitable deposit, may also borrow books. Historical books may only be consulted on the premises. The Society subscribes to some of the leading photographic magazines which are only to be read on the premises.

EPS BULLETIN: The bulletin is sent out by email (paper copy by request) three times per year to every member. It contains news of past and future events. Members are encouraged to submit items of interest to the Bulletin Editor.

STUDIO: A well-equipped studio is available for the use of members who have paid the Studio Fee (see Annual Subscriptions). It is equipped with studio flash, backdrops etc. for portraiture. The studio must be booked in advance. Studio members are not allowed to use the studio until they have had introductory training to ensure correct use. Once training has been satisfactorily completed, studio members are given access via the security key fob system and the online booking system, subject to the following rules (*Members who fail to comply may be banned*):

- . The studio may be booked for up to 3 hours, and only once per day.
- . No more than 3 advance bookings may be made, of which only one may be at a weekend.
- . There should be a gap of 30 minutes either side of your booking.
- . The studio must be left clean and tidy.
- . The studio must NOT be used for professional photography or commercial work; this is deemed to be receiving a fee or making a sale. This could jeopardise our charitable status.

WEBSITE and MAIL LIST: Edinburgh Photographic Society's website address is www.edinburghphotographicsociety.co.uk.

For any comments, ideas, deletions or inclusions please contact the webmaster using the website's contact form. Please ensure that you sign up to the group mailing list. Society correspondence is distributed via this list. Details can be found on the Society's website at www.edinburghphotographicsociety.co.uk/wp/members/mailling-list/.

Membership Data: The Society has a legitimate interest in holding personal information about its members for the Purpose and Activities of the Society. The Administration Section on the Society's web site provides links to the Society's Constitution and Data Protection Policy.

EXHIBITIONS: Members are encouraged to participate in the Society's Exhibitions:

Exhibition of Members' work in the Fine Art Library on George IV Bridge. This informal open exhibition is held each November and all members are invited to contribute up to 4 printed images. Organisers: Doug Hamilton CPAGB and Sue Hamilton CPAGB will advise by email.

Annual Members' Exhibition. This is the culmination of work by members over the year, and awards are made for outstanding work in various categories. It is open to the public for one day in April.

Edinburgh International Exhibition of Photography. One of the oldest exhibitions of Photography in the world, this prestigious exhibition has been running for 156 years. It attracts some of the best photography from all over the world. The exhibition is organised by the Society's members whose help is essential for the unpacking, labelling, setting-up, mounting, cataloguing and door-manning at the exhibition. Members also assist the invited panel of Judges by running the logistics on two judging days. Helpers get to see some great images close-up including those that don't quite make the final 202 prints selected from the thousands submitted. The Exhibition is open to the public for four weeks each August during the Edinburgh International Festivals, when the Society's premises become a Festival Fringe Venue. Members who enter compete for the Edinburgh Medal.

The Basement Gallery is available to members, internal and external groups for print exhibitions. Members who wish to use the Gallery for an exhibition should contact Sandy Cleland.

ANNUAL SUBSCRIPTIONS

Initial Enrolment Fee (Key-Fob deposit)	£ 5.00
Ordinary Member	£ 82.00
Supplementary Membership of Spouse or Civil Partner	£ 55.00
Country Member <i>(those residing outside a radius of 25 miles from EPS Premises)</i>	£ 55.00
Junior Member <i>(member over 16 but under 18 years of age on 1st September 2018)</i>	£ 26.00
Student Member <i>(Proof of full-time attendance at a recognised educational establishment is required)</i>	£ 26.00
Darkroom Fee	£ 53.00
Studio Fee <i>(not inc. Studio Group membership)</i>	£ 67.00
Locker Fee	£ 18.00
Life Membership Payment	£ 1,230.00
Supplementary Life Membership for Spouse or Civil Partner	£ 785.00

The financial year commences on 1st September. New Ordinary Members joining on or after 1st January shall pay a half subscription for the year then current. This does not apply to members renewing who must pay the full fee. Darkroom, Studio, and Locker fees must always be paid in full. Junior members are not permitted to use the Darkroom or Studio except on occasions with special permission. Life members are entitled to use the Darkroom & Studio. They are responsible for paying any locker rental, key deposits or Group membership fees.

CHANGES to PERSONAL DETAILS: All members of the Society must inform the Membership Secretary immediately when they change address, telephone numbers or email addresses otherwise bulletins, copies of the syllabus and membership renewal forms are likely to go astray. Applicants for membership who are likely to be changing their address should give a fixed address. For example, students should give a University Union address rather than digs.

KEYS: A personalised key fob for access to the main door, studio, and darkroom will be issued to each member on payment of the relevant fees.

SYLLABUS 2018 – 2019

Members of the public are welcome to attend WEDNESDAY evening Lectures.

ALL MEETINGS (except the Open Night) START AT 7:30 p.m. TO AVOID DISTURBING THE LECTURER OR THE AUDIENCE IT WOULD BE APPRECIATED IF MEMBERS WOULD BE SEATED BY THIS TIME. EARLY ARRIVAL IS RECOMMENDED.

C = Creative Digital Group N = Nature Group D = Delos Group
P = Phoenix Group S = Studio Group CM = Council Meeting.
Soc = Social Event AVG = Audio-Visual Group

SEPTEMBER 2018

11 Tue	CM	Council Meeting
19 Wed		OPEN NIGHT President's Welcome and demonstration of various group activities
26 Wed		GRACIE ALISON MEMORIAL LECTURE Gracie Alison was Secretary of EPS for 40 years and a guiding light to the Society, as well as being a distinguished photographer herself.

This season's Gracie Alison Memorial Lecture will be given by **Margaret Salisbury (Wales) FRPS MFIAP FIPF AWPF APAGB HonVP EPS - The Lucky Dragon** – Sponsored by Fotospeed (Prints) - People, Events, Travel, Creative, Landscape, Seascapes etc. with the stories to go with the images.

OCTOBER 2018

1 Mon	C	Creative Digital Group	Opening Night. Introduction to the group, our competitions and activities. Members will show results of their summer projects.
2 Tue	S	Studio Group	Open Studio Night - details will be forwarded by email
3 Wed	Soc	Social Night	New Season Kick-off. Bring 1 or 2 prints taken outdoors. Refreshments provided - £1 donation.
8 Mon	C	Creative Digital Group	A night with Barrie Spence. http://galleries.spencephotography.co.uk/
10 Wed		Lecture:	Niamh Whitty FIPF (Ireland), "Elsewhere" Prints www.elsewhere.ie
13 Sat		Open Workshop (10:00 a.m. start)	Internal & External Competitions (new members especially invited to bring 6-10 images for informal critique / advice)
15 Mon	C	Creative Digital Group	Informal night with self-help groups to share and develop skills
16 Tue	N	Nature Group	Nature Group: Opening meeting. Get to know fellow members by bringing some of your images along for mutual discussion.
17 Wed		Lecture:	Rafael Rojas, Hasselblad Master 2014, ARPS, (Switzerland), "Timeless" - A Creative Journey www.rafaelrojas.com (Hand in <u>2 Prints</u> for Print Competition 1)
18 Thu	AVG	A-V Group	Kick-off meeting with opening presentation by Graeme Gainey.
22 Mon	C	Creative Digital Group	Workshop on editing techniques in Lightroom with Scott Russell www.creative-lab.co.uk (Submit images for Interclub Selection Night)
24 Wed		Lecture:	Libby Smith MPAGB EFIAP HonPAGB HonSPF (Carlisle) "Before and After" Digital, some prints
25 Thu	P	Phoenix Group	
29 Mon	C	Creative Digital Group	Interclub Selection Night when members select the winning entries.
31 Wed	PC	Print Competition 1	Judge: Stewart Dodd LRPS (Dundee) (Submit 2 Images for Digital Image Competition 1)

NOVEMBER 2018

5 Mon	C	Creative Digital Group	Studio fun night in EPS's own Studio. Bring your camera!
6 Tue	S	Studio Group	Open Studio Night - details will be forwarded by email
7 Wed		Lecture:	Irene Froy <i>EFIAP MPAGB HonPAGB BPE4*</i> "Pastel Moments" Prints www.irenefroy.com
12 Mon	C	Creative Digital Group	Photo Safari night to discuss this year's Safari panel.
13 Tue	N	Nature Group	Bring images for discussion.
14 Wed	PDIC	Digital Image Competition 1	Judge: Eddie Telford (Ayr) (<i>Hand in <u>2 Prints</u> for Print Competition 2</i>)
15 Thu	SPS	Studio Portrait Session	Led by Eric Robinson – small group studio sessions - details by email
19 Mon	C	Creative Digital Group	Camera fun night. Bring your camera! Also 4-way Interclub competition at Kirkcaldy.
21 Wed		Lecture:	Mark Littlejohn "Split Toning the Landscape" Digital www.marklittlejohnphotography.com
22 Thur		Adobe Software	Aspects of Photoshop with Scott Russell www.creative-lab.co.uk
24 Sat		Special Lecture:	Scotland the Big Picture Lecture co-sponsored by EPS at the Royal College of Physicians, Edinburgh – EPS Members £10.
26 Mon	C	Creative Digital Group	ICM & Me with Muriel Binnie. www.flickr.com/photos/128051423@N07
27 Tue	CM	Council Meeting	
28 Wed		Lecture:	Peter Paterson <i>FRPS MFIAP MPAGB</i> "Photography my Way" Dig, some Prints www.peterpaterson.com
29 Thu	P	Phoenix Group	

DECEMBER 2018

3 Mon	C	Creative Digital Group	Photo Safari Show and Tell. Each team will present their panel for the admiration of all.
4 Tue	S	Studio Group	Open Studio Night - details will be forwarded by email
5 Wed	PC	Print Competition 2	Judge: Bob Humphreys DPAGB (Donside)
10 Mon	C	Creative Digital Group	Members show their favourite images from 2018 followed by Christmas social.
11 Tue	N	Nature Group	Nature Group: Selection evening for the Group's Print Exhibition in February. Prints do not need to be mounted at this stage.
12 Wed		Lecture:	Andy Hayes (Brechin & Dundee) ARPS CPAGB EFIAP " <i>Wildlife Kaleidoscope</i> " <i>Digital, some video (Submit 2 Images for Digital Image Competition 2)</i>
13 Thu	SPS	Studio Portrait Session	Led by Eric Robinson – small group studio sessions - details by email
19 Wed	Soc	Social Evening	Christmas Social
20 Thu	P	Phoenix Group	

Edinburgh Photographic Society winner of the Best Scottish Club Award 2018

For the third year in succession EPS has won the *Best Scottish Club Award* at the **Scottish International Salon of Photography**.

Many thanks to all who contributed to this success and congratulations to those members who gained acceptances and awards.

WE NEED YOUR HELP FOR 4-IN-A-ROW IN 2019

MERRY CHRISTMAS
and a
HAPPY NEW YEAR

JANUARY 2019

7 Mon	C	Creative Digital Group	Informal night with self-help groups to share and develop skills. (Submit entries for On-line Competition.)
8 Tue	CM	Council Meeting	
9 Wed	PDIC	Digital Image Competition 2	Judge: Ian Tully ARPS CPAGB (Bearsden & Milngavie) (<i>Hand in <u>2 Prints</u> for Print Competition 3</i>)
14 Mon	C	Creative Digital Group	'Berlin Stones' with Eion Johnston FRPS.
15 Tue	S	Studio Group	Open Studio Night - details will be forwarded by email
16 Wed		Lecture:	Derek Clark (The KAGE Collective) " <i>Shooting People is Legal!</i> " <i>Street and Documentary Digital</i> www.derekclarkphotography.com
21 Mon	C	Creative Digital Group	Workshop on editing techniques with Scott Russell www.creative-lab.co.uk
22 Tue	N	Nature Group	Nature Group: Talk by Liz Cole on Plant Photography with discussion. (<i>Hand in mounted prints for the February Exhibition</i>)
23 Wed	PC	Print Competition 3	Judge: Hunter Kennedy ARPS MPAGB EFIAP (Carluk) (<i>Submit 2 Images for Digital Image Competition 3</i>)
24 Thu	SPS	Studio Portrait Session	Led by Eric Robinson – small group studio sessions - details by email
28 Mon	C	Creative Digital Group	Online competition feedback and discussion.
30 Wed		Lecture:	Keith Cavers " <i>John Abraham Slezzer – Scotland's first Photographer?</i> " <i>Digital</i>
31 Thu	P	Phoenix Group	

FEBRUARY 2019

4 Mon	C	Creative Digital Group	A night exploring the medium of film with Malcolm Christie and Adrian Cullen.
6 Wed	PDIC	Digital Image Competition 3	Judge: John Ross DPAGB EFIAP/b (Inverness) (<i>Hand in <u>2 Prints</u> for Print Competition 4)</i>)
11 Mon	C	Creative Digital Group	Underwater Photography with Rosemary Gillies. (<i>Submit 2 images for Digital Challenge Cup Competition</i>)
12 Tue	S	Studio Group	Open Studio Night - details will be forwarded by email
13 Wed		Interclub v Queens Park (home)	Tonight we welcome Queens Park CC for our annual battle.
18 Mon	C	Creative Digital Group	Camera fun night. Bring your camera!
19 Tue	N	Nature Group	Discussion evening of your images on the theme of nature in the snow. (<i>Nature Group Trophy entries should be emailed to the Group Secretary by Tuesday 12th. March</i>)
20 Wed	PC	Print Competition 4	Judge: Margaret Elliot DPAGB EFIAP (Dumfries) (<i>Submit 2 Images for Digital Image Competition 4</i>)
21 Thu	SPS	Studio Portrait Session	Led by Eric Robinson – small group studio sessions - details by email
21 Thu		Adobe Software	Aspects of Photoshop with Scott Russell (www.creative-lab.co.uk)
25 Mon	C	Creative Digital Group	Peter Paterson demonstrates his editing skills.
27 Wed		Lecture:	Jamie Simpson ARPS “ <i>Silk Purses</i> ” <i>Digital</i> www.jamiesimpson.photo
28 Thu	P	Phoenix Group	

MARCH 2019

4 Mon	C	Creative Digital Group	Digital Challenge Cup Judging Night. Judge TBC. <i>(Submit 3 images and panel image for Cunningham Cup Competition)</i>
5 Tue	CM	Council Meeting	
6 Wed		Lecture:	Dr Donald Stewart FRPS <i>"Building on the Shoulders of Giants"</i> <i>(Hand in up to 4 PRINTS and/or 4 Digital Images for the Members' Exhibition)</i> <i>(Please return all Trophies ASAP to Members' Exhibition Secretary)</i>
11 Mon	C	Creative Digital Group	A night with the EPS Nature Group.
12 Tue	S	Studio Group	Open Studio Night - details will be forwarded by email
13 Wed	PDIC	Digital Image Competition 4	Judge: Charles Summers (Bonnyrigg)
15 Fri		Interclub v Carluke (away)	Visit to Carluke CC for our annual battle (<i>Travelling Support welcome</i>)
18 Mon	C	Creative Digital Group	Members show the images they've taken on the camera nights.
19 Tue	N	Nature Group	Trophy Judging and AGM.
20 Wed		International Photo Exchange	Images from Gibraltar PS, Moussy Art Photo (Paris), Waikato PS (N.Z) and Edinburgh PS
25 Mon	C	Creative Digital Group	Cunningham Cup Judging Night. Judge TBC.
27 Wed		Lecture:	Jean Manson <i>"The King of the Arctic – A Threatened Species"</i> https://www.jeanmanson.gallery
28 Thu	P	Phoenix Group	

The 157th EDINBURGH INTERNATIONAL EXHIBITION OF PHOTOGRAPHY

will take place from 28th July to 25th August 2019.

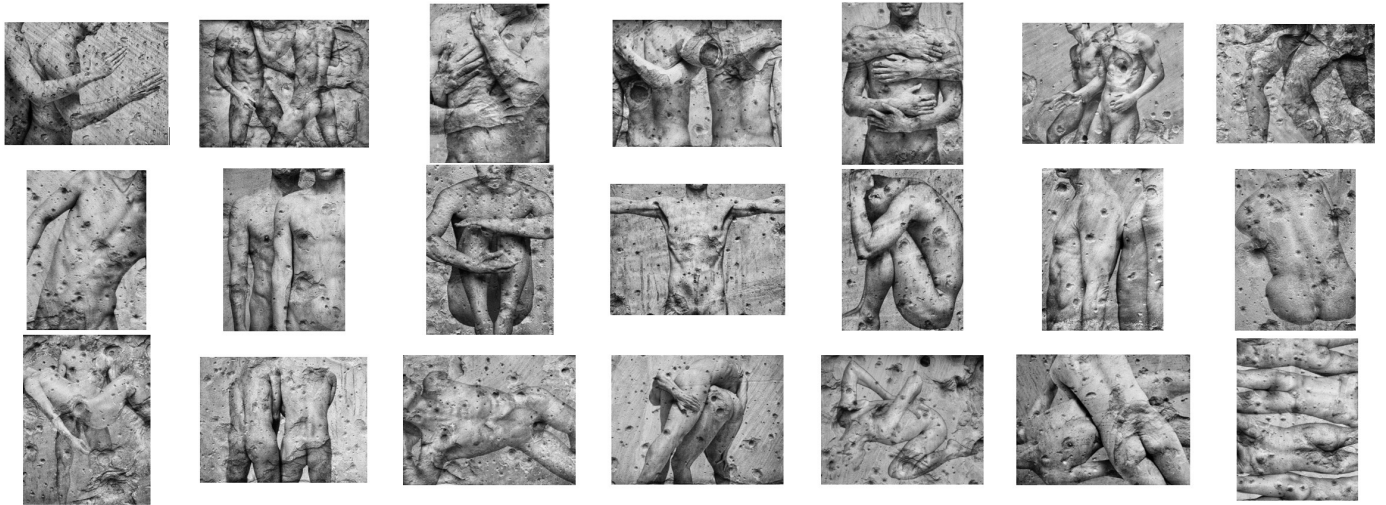
www.edinburghphotosalon.org

APRIL 2019

1 Mon	C	Creative Digital Group	Treasure Hunt! Bring your camera or your phone.
3 Wed		Annual General Meeting	
8 Mon	C	Creative Digital Group	All about printing and show and tell our efforts to create an advert!
9 Tue	CM	Council Meeting	
10 Wed		Lecture:	Chris Stuart <i>"Highland Photography" Digital</i> www.highlandphotography.co.uk
15 Mon	C	Creative Digital Group	AGM, presentation of trophies and End of Season Social Night.
16 Tue	N	Nature Group	Bring a selection of your images for discussion.
17 Wed		The President's Evening	Details TBA
23 Tue	S	Studio Group	Open Studio Night - details will be forwarded by email
25 Thu	P	Phoenix Group	
27 Sat			Members' Night at the Members' Exhibition
28 Sun			Members' Exhibition Public Viewing

JUNE 2019

2 Sun	Summer Barbecue in the Garden – All Members and Families welcome – Details TBA nearer the time		
-------	--	--	--



Eion Johnston
Fellowship - Fine Art

Eion Johnson FRPS is the winner of the Royal Photographic Society's Fellowship of the Year for 2017. Our huge congratulations to him for winning this prestigious award with his Fine Art panel "Berlin Stones" You can find it here on the RPS web-site <http://rps.org/member/gallery/distinctions-distinctions-album/Fellowship-Fine-Art-Portfolio---Eion-Johnston-FRPS>

MONTHLY COMPETITIONS

Prints and Projected Images: Members are encouraged to submit entries for these Competitions which are held from November to March. The subject is open i.e. one may enter pictorial, record, nature or scientific photographs. Print and projected image entries will be marked out of 20 and will be commented on by the Judge on Competition Night. Two entries may be submitted to each competition.

The four Print and four Projected Image Monthly Competitions are separate and alternate at approximately two-week intervals. There are two leagues for both competitions. On each competition night the judge will also nominate the best overall image of the evening, regardless of league.

Awards and Trophies: At the end of the season Trophies will be awarded in each League based on each member's 5 best scores. In the event of a tie, the best six scores will be used, and so on.

The following trophies are presented at the AGM of the Society.

The Competition Quaich
League 1 Print Competition

The Clare Sproull Cup
League 2 Print Competition

The Oliver Leach Trophy
League 1 Projected Image Competition

The George Neilson Trophy
League 2 Projected Image Competition

SECTIONS AND PROMOTION RULES

Members may enter their images in one of two Leagues – League 1 and League 2. This applies separately to print and projected image competitions, and to the Members’ Exhibition. The following are guidelines for selecting the appropriate League in which to enter images.

League 1: Members who hold any level of distinction from any recognised awarding body, such as the RPS, PAGB, FIAP or BPE must enter this section.

League 2: Members who do not hold any such distinctions, as indicated above, may enter League 2.

Members unsure of which League to enter should consult the External, Print or PDI Competition Secretaries or member of Council for advice (see “Other useful contacts” near the start of this booklet).

Any member may submit work for appraisal, at any time, with a view to promotion to League 1.

Methods of Promotion: Normally, promotion from League 2 to League 1 is decided on performance in the Monthly Competitions. Members whose five highest marks total or exceed 87 will be promoted to League 1. These totals are determined separately for Prints and Projected Images. Success in the annual Members’ Exhibition may also lead to promotion.

IMAGE SUBMISSION DETAILS

PRINTS

Identification - All prints must bear a title, the member's Number (not name) and League.

Mounting - All prints must be mounted on board, either flush-mounted or window-mounted. No adhesive or Velcro-type patches should be attached as these may damage other members' prints.

Print Size - No print including mount may exceed 50 cm x 40 cm.

Digital Files - For each print submitted a member must also submit a digital file at normal projection resolution (see "Digital Images" section) by email to epsprints@edinburghphotographicsociety.co.uk. These files will be used to display images at the Monthly Print Competitions. *(Members producing prints by non-digital processes should also provide a digital copy.)*

Printing - In both Leagues, printing (traditional or digital) by a third party is acceptable, but this must be noted on the back of the print, otherwise **all work submitted must be completely the work of the author**.

All prints must be placed on the appropriate shelf in the Library on or before the competition hand-in date. Members should take care of their own and other members' prints when doing so. Any prints which are not collected by Members on competition nights, or are retained for display, will be replaced on the shelves in the Library for collection as soon as possible. The Society reserves the right to dispose of prints which have not been collected within two months.

At the end of the competition evenings, as many prints as possible will be placed on the display boards at the front of the meeting room to allow close inspection. In addition, a selection of high-scoring prints will be displayed in the lobby, until the next print competition. Members who do not wish their prints to be so displayed should inform the Print Competition Secretary.

DIGITAL IMAGES

MUST be .jpg (**JPEG**), and should be 1600 pixels (maximum) horizontally x 1200 pixels (maximum) vertically. It is recommended that you use the sRGB profile. Please do not submit images larger than this. Images should be submitted by email to **comps@edinburghphotographicsociety.co.uk**

File names should follow the following convention: XX_nnnn_Image name.jpg where XX=L1 or L2 (League 1 or League 2) and nnnn is your four-digit membership number.

Your image name may contain spaces and should be capitalised as appropriate. Please note that underscores are used to separate the components of the file name and should not be used within your image name. Full submission guidelines are on the EPS website under "**Competition Guidelines**".

GENERAL

The Society's Data Protection Policy explains that we seek members' permission to use photographic works as part of the purpose and activities of the Society. Prints and projected images entered for any society competitions, or the Members' Exhibition, may be used for any Inter-club or national competition in which the Society takes part or on the society's website or for promotion of the Society in other media. The photographer retains copyright at all times and will be credited.

All images, and/or the constituent parts of an image, must be the original work of the author.

A committee consisting of the President, relevant Competition Secretary and Judge for the evening may, at their discretion, refuse to display any entry.

Any print or projected image receiving a mark of 12 or less may be resubmitted, once only, to a different judge.

Sandy Cleland FRPS AFIAP

EPS is delighted that Sandy has become Honorary Vice-President of the Society. This is an honour that recognises Sandy's great contribution to the Society throughout his (around) 50 years of membership. Sandy is a Past President and has held many roles within the Society. He is still actively involved with the International Exhibition and as co-ordinator of External Exhibitions. Sandy, a winner of the RPS Fenton Medal in 2005, has been active in the RPS as L Panel Chair, member of the A & F Nature Panel, member of the Fellowship Board and Distinctions Advisory Board. In 2012, he became one of only a few photographers to have been invited to join the prestigious London Salon. Sandy, whose photography started age 13 with standard 8mm cine film, is well known for his passion for natural history images. He enjoys many other genres too and is still as enthusiastic today as when he first started.

Following is a small selection of Sandy's images.



“Dipper with Grubs” by Sandy Cleland



“Dancers” by Sandy Cleland



“Kenny and Jimmy” by Sandy Cleland



“Hare Grooming After Rain” by Sandy Cleland



“Springtime” by Sandy Cleland

“Short-eared Owl Hunting”
by Sandy Cleland



2019 MEMBERS' EXHIBITION

Secretary Muriel Binnie

The Exhibition will be held on Sunday 28th April with Members' Night being Saturday 27th. The judge for both prints and projected images will be advised later.

Print Awards

The EPS Trophy	The best overall print in the exhibition
The Forbes Adam Cup	The best print in League 1 not already winning an award
The Dunbar Trophy	The best print in League 2 not already winning an award
The Centenary Cup	The best panel of prints in League 1
The President's Trophy	The best panel of prints in League 2
The Lord Caplan Trophy	The print showing the most innovative use of colour in contemporary photography
The Edinburgh Cameras Cup	League 1 print showing the greatest creativity
The Sean Casey Medal	League 2 print showing the greatest creativity
The John Robb IPF Medal	The best landscape print not already winning an award
The Jim McDougal Trophy	The best sports print
The Rosemary Davidson Salver	The best natural history print
The Phoenix Trophy	The best monochrome print

Projected Image Awards

The Russell Trophy	The best overall projected image in the Exhibition
The Campbell Harper Trophy	The best projected image in League 1 not already winning an award
The Neil Scott Cup	The best projected image in League 2 not already winning an award
The St Vincent Trophy	The best set of projected images in League 1
The Butler Cup	The best set of projected images in League 2
The Spectrum Award	The projected image showing the greatest creativity in League 1
The TCM Bradley Award	The projected image showing the greatest creativity in League 2

Honourable Mention Certificates may also be awarded in each League.

The same image (or very similar image) cannot be entered in both Print and Projected Image sections.

A small selection of 2018 Members' Exhibition Successes...



“In the Spotlight” by Derek Robertson,
The Dunbar Trophy



“Palm Trees” by Chris Osbourne
Sean Casey Medal



“Bathed in Light” by Muriel Binnie, *The EPS Trophy*



“Frosty Night in Glencoe” by Graeme Gainey, *The Campbell Harper Trophy*



“Reed Bunting” by Jean Manson,
The Rosemary Davidson Salver



“Abandoned” by Alan Givens ARPS, CPAGB,
The Forbes Adam Cup



“The Lone Skier” by Jan Jerome ARPS
The Jim McDougal Trophy



“A Walk in the Woods” by Ian McNaught LRPS
The Edinburgh Cameras Cup



“Fade Away-1” by Charles Keddie
The Spectrum Award

HAND-IN DATES

		Entries		Date
		Up to		
Exhibitions	Art and Design Library Exhibition	4	Prints	End Oct
	Dublin Exhibition	2	Prints	Mid Nov
Monthly Competitions	Print #1	2	Prints	17-Oct
	Digital #1	2	PDI	31-Oct
	Print #2	2	Prints	14-Nov
	Digital #2	2	PDI	12-Dec
	Print #3	2	Prints	09-Jan
	Digital #3	2	PDI	23-Jan
	Print #4	2	Prints	06-Feb
	Digital #4	2	PDI	20-Feb
Members Exhibition	Members Ex PDI	4	PDI	06-Mar
	Members Ex Prints	4	Prints	06-Mar
CD Group	4-way Interclub Selection	4	PDI	22-Oct
	On-line Competition	2	PDI	07-Jan
	Digital Challenge Cup	2	PDI	11-Feb
	Cunningham Cup	3	PDI	04-Mar
Nature Group	Nature Group Exhibition		Prints	22-Jan
	<i>An Iolaire</i> Trophy		PDI	12-Mar

<u>Scottish Photographic Federation Events</u>		
http://www.scottish-photographic-federation.org/diary		
SPF Digital Championship	Closing Date	04-Nov
	Judging Date	18-Nov
SPF Print Championship	Closing Date	26-Jan
	Judging Date	17-Feb

Useful email addresses:

(Some key contacts are below. If you need to contact any other member of the Society, please email the Secretary who will be able to put you in touch with the specific or relevant person)

Main Office Bearers

President	president@edinburghphotographicsociety.co.uk
Secretary	secretary@edinburghphotographicsociety.co.uk
Treasurer	treasurer@edinburghphotographicsociety.co.uk

Membership

Membership Secretary	membership@edinburghphotographicsociety.co.uk
New Membership Secretary	newmembers@edinburghphotographicsociety.co.uk

Groups

Studio Group Secretary	studio@edinburghphotographicsociety.co.uk
Nature Group Secretary	nature@edinburghphotographicsociety.co.uk
Phoenix Group Secretary	phoenixgroup@edinburghphotographicsociety.co.uk
Delos Group Secretary	delos@edinburghphotographicsociety.co.uk
CD Group Secretary	cdgroup@edinburghphotographicsociety.co.uk

Competitions

Monthly Projected image competitions hand-in	comps@edinburghphotographicsociety.co.uk
Monthly Print Competitions digital image to accompany prints hand-in	epsprints@edinburghphotographicsociety.co.uk
CD Group Competitions image hand-in	cdgroup@edinburghphotographicsociety.co.uk

Functions

Bulletin Editor	bulletineditor@edinburghphotographicsociety.co.uk
Syllabus Secretary	syllabus@edinburghphotographicsociety.co.uk
House Convenor	houseconvenor@edinburghphotographicsociety.co.uk
Curator	curator@edinburghphotographicsociety.co.uk
Webmaster	webby@edinburghphotographicsociety.co.uk

Edinburgh International Salon

International Exhibition Secretary	info@edinburghphotosalon.org
International Exhibition Treasurer	Intextreasurer@edinburghphotographicsociety.co.uk



SCOTLAND THE BIG PICTURE

Amplifying the case for a wilder Scotland.



Join us for an evening of stunning imagery, as we pose the question:
What should Scotland look like?



SPEAKER: Peter Cairns (*Director SCOTLAND: The Big Picture*)
LOCATION: Royal College of Physicians Edinburgh,
Queen St, EH2 1JQ
DATE: 24th November 2018 @ 7pm
PRICE: £12 (*EPS Members £10*)
TICKETS: www.scotlandbigpicture.com



157th Edinburgh International Exhibition of Photography



Our prestigious annual exhibition will take place in the Society's premises at 68 Great King Street during the Edinburgh International Fringe Festival in 2019.

Open to all, the Edinburgh International Salon is one of the very few print-only photography salons in the world. Our exhibition accepts just 202 images from the thousands submitted.

“Getting an acceptance at Edinburgh is like getting a medal at other salons”

Why don't you enter this time? Look for details on the website:

www.edinburghphotosalon.org