

## **Edinburgh Photographic Society.**

### **An easy-to-make Pinhole Camera.**

This design has the advantage of being not only easy to make but giving you 12 (or more) pictures in one loading.

The attached sheets show how to build the camera.

The effective 'focal length' of the pinhole can be changed by making front boxes of different lengths; dimension 'L' on drawings.

Normal length is about 40mm.

Wide angle is about 30mm.

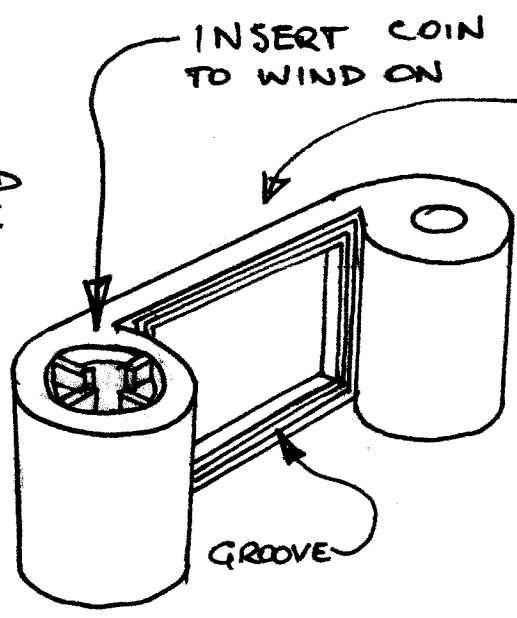
Telephoto is about 80mm.

You can change boxes in mid film but only by sacrificing one frame of film for each change.

*A (very) approximate viewfinder can be made too, if you wish. See sketch. Make the front part out of bent wire with a rectangular part of 32x28mm. Make the rear part from card with a 6mm (1/4 inch) hole. Position the viewing hole and the wire frame, in line, about the same distance apart as the distance between the position of the film in the cartridge and the camera's pinhole. (Depends on the length of front box you've made.) If you tape the viewfinder bits as shown, they will be about the right distance apart.*

126 size film cartridges are still available but you may need to hunt a bit to find a stockist. Kodak's 'Verichrome Pan' is the only B&W available. It is a 125 ISO speed, general purpose film with good latitude, ie. Ideal for pinholes! Colour negative film is also available.

STANDARD  
1/26 SIZE  
FILM

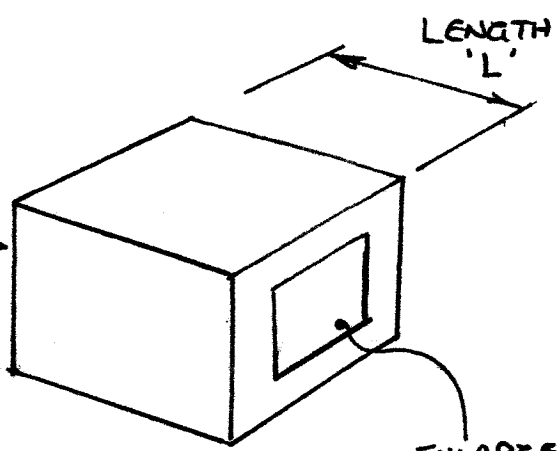


INSERT COIN  
TO WIND ON

'WINDOW' AT BACK  
SHOWS FRAME  
COUNTER

GROOVE

OPEN  
AT BACK  
PAINT  
INSIDE  
BLACK

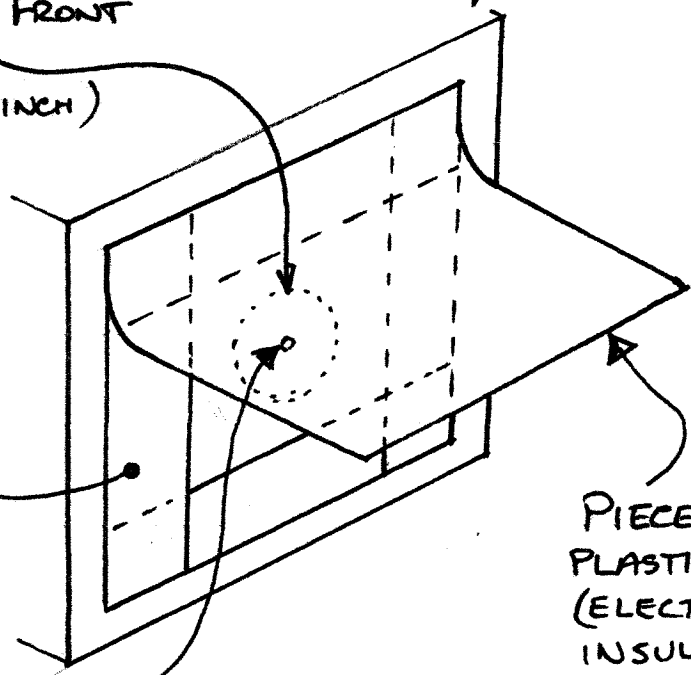


MAKE CARDBOARD  
BOX TO FIT INTO  
GROOVE IN FILM  
CARTRIDGE.

ENLARGED  
VIEW

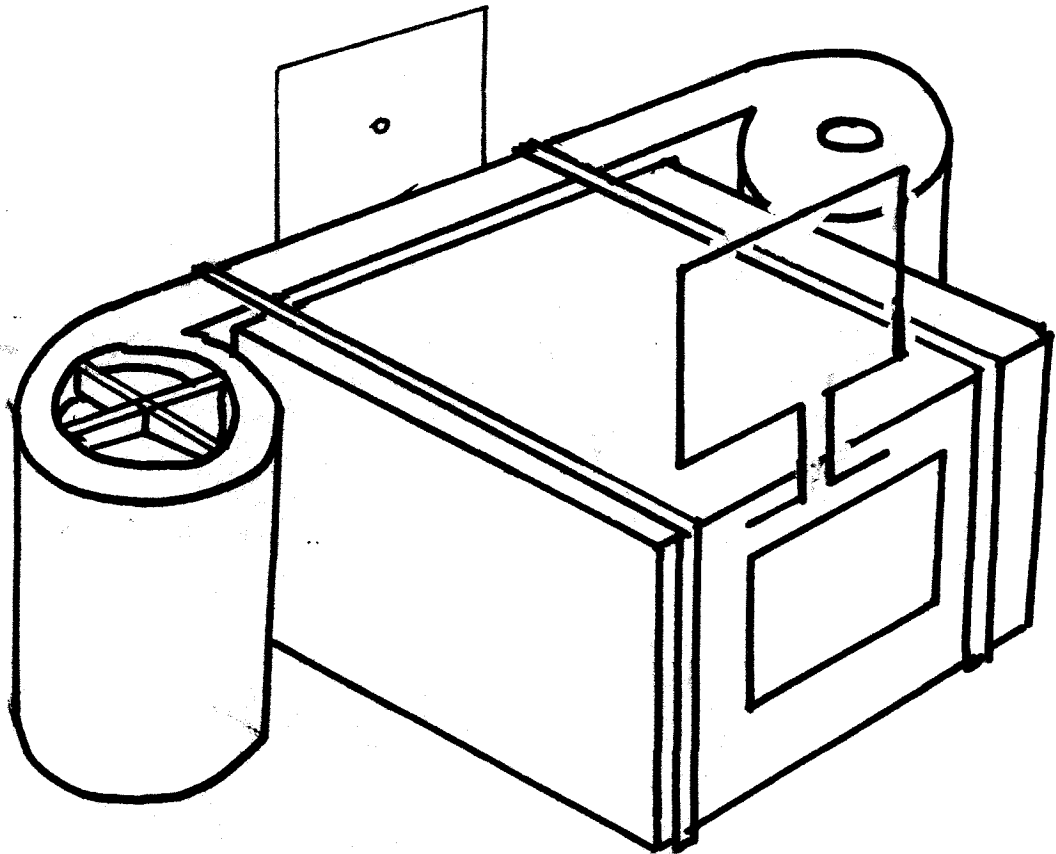
HOLE IN FRONT  
OF BOX  
(ABOUT  $\frac{1}{4}$  INCH)

PIECE OF  
COOKING FOIL  
OVER HOLE IN  
CARD. (HOLD IN  
PLACE WITH  
STICKY TAPE)



PIECE OF BLACK  
PLASTIC TAPE  
(ELECTRICIAN'S  
INSULATING TAPE)  
TO ACT AS  
SHUTTER.

PIN HOLE  
IN FOIL



FINISHED CAMERA

(HELD TOGETHER WITH RUBBER BANDS.)